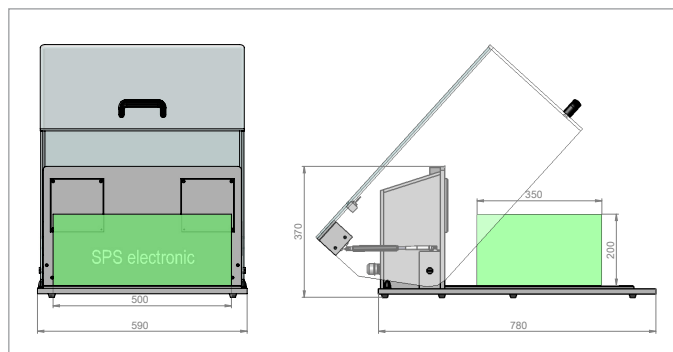


DATA SHEET

Accessories: Test hood HB 3400A



Test hood HB 3400A



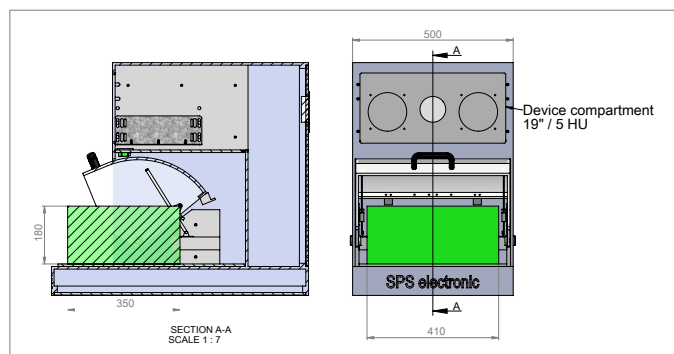
Description	For test station installations in which a necessary protection against contact is required, test hoods are especially well suited. Through the test hood the DUT cannot be touched during the generation of dangerous voltages. Once the test hood is opened there is a forced switch-off of the dangerous voltage.	
HB 3400A	<ul style="list-style-type: none"> Housing made of PVC (colour: RAL 7011) Swivelling acrylic glass hood with damper cylinder Positively driven safety switch or optional positively driven safety interlock type AZM 161 External dimensions (HxWxD): 370 x 590 x 780 mm (14.6 x 23.2 x 30.7 in.) Maximum DUT dimensions (HxWxD): 200 x 500 x 350 mm (7.9 x 19.7 x 13.8 in.) Setup CE-compliant (European regulation) 	
Variants	Test cage with light curtain	Instead of an acrylic glass hood also a safety light curtain can be used. This version meets the same requirements is, however, more convenient in handling because the test personnel does not need to operate the hood by hand. This is especially important with high quantities.
	Test cage with trapdoor	Test cages with trapdoor are mainly used when ergonomically a high number of DUT with a high weight is to be tested. The trapdoor is pneumatically moved, therefore the operator merely has to press a button, not move any mechanics.
	Tandem test hood	For large quantities so-called tandem test hoods are also a good solution. Here two equal test areas are available. While it is tested in one test area, the other one can be loaded or unloaded at the same time. In a similar test and handling time the result is an optimum utilization of human and machine. Tandem test hoods can be equipped with swivelling acrylic glass hoods, movable test hoods or also with safety light curtain.

Versions

Design types	Specialty	Max. dimensions of DUT (HxWxD) in mm (in.)	Type
Simple test hood	Device compartment 19" / 5 HU	180 x 410 x 350 (7.1 x 16.1 x 13.8)	HB 2100A
Simple test hood	Standard	200 x 500 x 350 (7.9 x 19.7 x 13.8)	HB 3400A
Extra wide test hood	Device compartment 19" / 5 HU	350 x 580 x 700 (13.8 x 22.8 x 27.6)	HB 5000A
Extra wide test hood	Double width, device compartment 2 x 19" / 4 HU	300 x 700 x 400 (11.8 x 27.6 x 15.7)	HB 6000A
Extra wide test hood	Double width, device compartment 2 x 19" / 5 HU	300 x 1,200 x 400 (11.8 x 47.2 x 15.7)	HB 7000A
Tandem test hood	Sliding hood, device compartment 2 x 19" / 3 HU	400 x 568 x 580 (15.7 x 22.4 x 22.8)	TK 6000A
Tandem test hood	Sliding hood	450 x 500 x 680 (17.7 x 19.7 x 26.8)	TK 7000A
Test cage with trapdoor	Trapdoor	755 x 800 x 640 (29.7 x 31.5 x 25.2)	FK 1000A
Test cage with light curtain	Light curtain on one side	790 x 640 x 660 (31.1 x 25.2 x 26.0)	PK 2000A
Test cage with light curtain	Double width, displaced foot space	940 x 1,890 x 975 (37.0 x 74.4 x 38.4)	PK 6000A
Test cage with light curtain	Device compartment 19" / 16 HU, displaced foot space	945 x 1,010 x 800 (37.2 x 39.8 x 31.5)	PK 7000A

DATA SHEET

Accessories: Test hood HB 2100A



Test hood HB 2100A with device compartment 19" / 5 HU

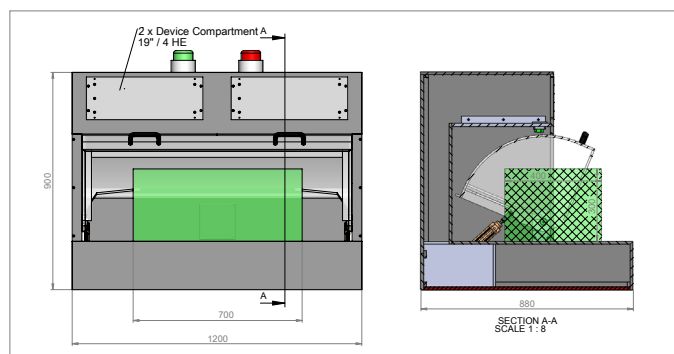
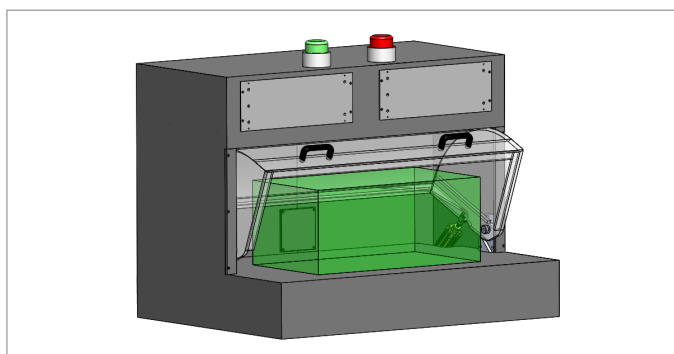
Description	For test station installations in which a necessary protection against contact is required, test hoods are especially well suited. Through the test hood the DUT cannot be touched during the generation of dangerous voltages. Once the test hood is opened there is a forced switch-off of the dangerous voltage.	
HB 2100A	<ul style="list-style-type: none"> Housing made of PVC (colour: RAL 7011) with device compartment 19" / 5 HU to house the test device Swivelling acrylic glass hood with damper cylinder Safety switch with positive opening or optional positively driven safety interlock type AZM 161 (device compartment 4 HU) External dimensions (HxWxD): 725 x 500 x 800 mm (28.5 x 19.7 x 31.5 in.) Maximum DUT dimensions (HxWxD): 180 x 410 x 350 mm (7.1 x 16.1 x 13.8 in.) Setup CE-compliant (European regulation) 	
Variants	Test cage with light curtain	Instead of an acrylic glass hood also a safety light curtain can be used. This version meets the same requirements is, however, more convenient in handling because the test personnel does not need to operate the hood by hand. This is especially important with high quantities.
	Test cage with trapdoor	Test cages with trapdoor are mainly used when ergonomically a high number of DUT with a high weight is to be tested. The trapdoor is pneumatically moved, therefore the operator merely has to press a button, not move any mechanics.
	Tandem test hood	For large quantities so-called tandem test hoods are also a good solution. Here two equal test areas are available. While it is tested in one test area, the other one can be loaded or unloaded at the same time. In a similar test and handling time the result is an optimum utilization of human and machine. Tandem test hoods can be equipped with swivelling acrylic glass hoods, movable test hoods or also with safety light curtain.

Versions

Design types	Specialty	Max. dimensions of DUT (HxWxD) in mm (in.)	Type
Simple test hood	Device compartment 19" / 5 HU	180 x 410 x 350 (7.1 x 16.1 x 13.8)	HB 2100A
Simple test hood	Standard	200 x 500 x 350 (7.9 x 19.7 x 13.8)	HB 3400A
Extra wide test hood	Device compartment 19" / 5 HU	350 x 580 x 700 (13.8 x 22.8 x 27.6)	HB 5000A
Extra wide test hood	Double width, device compartment 2 x 19" / 4 HU	300 x 700 x 400 (11.8 x 27.6 x 15.7)	HB 6000A
Extra wide test hood	Double width, device compartment 2 x 19" / 5 HU	300 x 1,200 x 400 (11.8 x 47.2 x 15.7)	HB 7000A
Tandem test hood	Sliding hood, device compartment 2 x 19" / 3 HU	400 x 568 x 580 (15.7 x 22.4 x 22.8)	TK 6000A
Tandem test hood	Sliding hood	450 x 500 x 680 (17.7 x 19.7 x 26.8)	TK 7000A
Test cage with trapdoor	Trapdoor	755 x 800 x 640 (29.7 x 31.5 x 25.2)	FK 1000A
Test cage with light curtain	Light curtain on one side	790 x 640 x 660 (31.1 x 25.2 x 26.0)	PK 2000A
Test cage with light curtain	Double width, displaced foot space	940 x 1,890 x 975 (37.0 x 74.4 x 38.4)	PK 6000A
Test cage with light curtain	Device compartment 19" / 16 HU, displaced foot space	945 x 1,010 x 800 (37.2 x 39.8 x 31.5)	PK 7000A

DATA SHEET

Accessories: Test hood HB 6000A



Test hood HB 6000A with double width and device compartment 2 x 19" / 4 HU

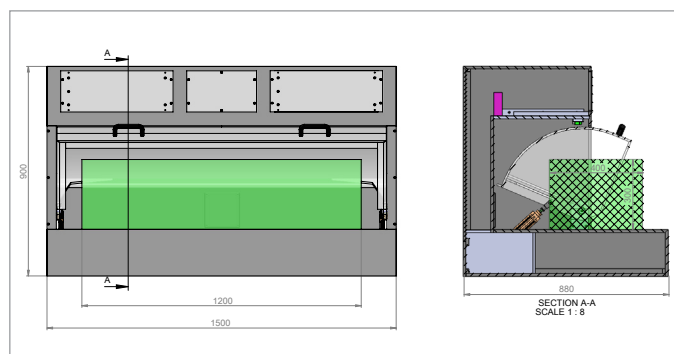
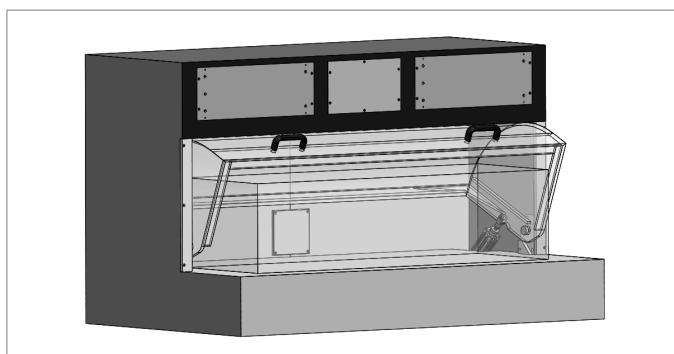
Description	For test station installations in which a necessary protection against contact is required, test hoods are especially well suited. Through the test hood the DUT cannot be touched during the generation of hazardous voltages. Once the test hood is opened there is a forced switch-off of the dangerous voltage.	
HB 6000A	<ul style="list-style-type: none"> Housing made of PVC (colour: RAL 7011) with device compartment 2 x 19" / 4 HU to house the test devices Swivelling acrylic glass hood with damper cylinder Safety switch with positive opening External dimensions (HxWxD): 900 x 1,200 x 880 mm (35.4 x 47.2 x 34.6 in.) Maximum DUT dimensions (HxWxD): 300 x 700 x 400 mm (11.8 x 27.6 x 15.7 in.) Setup CE-compliant (European regulation) 	
Variants	Test cage with light curtain	Instead of an acrylic glass hood also a safety light curtain can be used. This version meets the same requirements is, however, more convenient in handling because the test personnel does not need to operate the hood by hand. This is especially important with high quantities.
	Test cage with trapdoor	Test cages with trapdoor are mainly used when ergonomically a high number of DUT with a high weight is to be tested. The trapdoor is pneumatically moved, therefore the operator merely has to press a button, not move any mechanics.
	Tandem test hood	For large quantities so-called tandem test hoods are also a good solution. Here two equal test areas are available. While it is tested in one test area, the other one can be loaded or unloaded at the same time. In a similar test and handling time the result is an optimum utilization of human and machine. Tandem test hoods can be equipped with swivelling acrylic glass hoods, movable test hoods or also with safety light curtain.

Versions

Design types	Specialty	Max. dimensions of DUT (HxWxD) in mm (in.)	Type
Simple test hood	Device compartment 19" / 5 HU	180 x 410 x 350 (7.1 x 16.1 x 13.8)	HB 2100A
Simple test hood	Standard	200 x 500 x 350 (7.9 x 19.7 x 13.8)	HB 3400A
Extra wide test hood	Device compartment 19" / 5 HU	350 x 580 x 700 (13.8 x 22.8 x 27.6)	HB 5000A
Extra wide test hood	Double width, device compartment 2 x 19" / 4 HU	300 x 700 x 400 (11.8 x 27.6 x 15.7)	HB 6000A
Extra wide test hood	Double width, device compartment 2 x 19" / 5 HU	300 x 1,200 x 400 (11.8 x 47.2 x 15.7)	HB 7000A
Tandem test hood	Sliding hood, device compartment 2 x 19" / 3 HU	400 x 568 x 580 (15.7 x 22.4 x 22.8)	TK 6000A
Tandem test hood	Sliding hood	450 x 500 x 680 (17.7 x 19.7 x 26.8)	TK 7000A
Test cage with trapdoor	Trapdoor	755 x 800 x 640 (29.7 x 31.5 x 25.2)	FK 1000A
Test cage with light curtain	Light curtain on one side	790 x 640 x 660 (31.1 x 25.2 x 26.0)	PK 2000A
Test cage with light curtain	Double width, displaced foot space	940 x 1,890 x 975 (37.0 x 74.4 x 38.4)	PK 6000A
Test cage with light curtain	Device compartment 19" / 16 HU, displaced foot space	945 x 1,010 x 800 (37.2 x 39.8 x 31.5)	PK 7000A

DATA SHEET

Accessories: Test hood HB 7000A



Test hood HB 7000A with double width and device compartment 2 x 19" / 5 HU

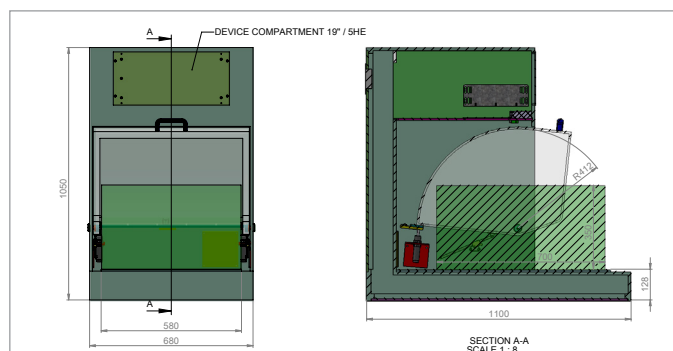
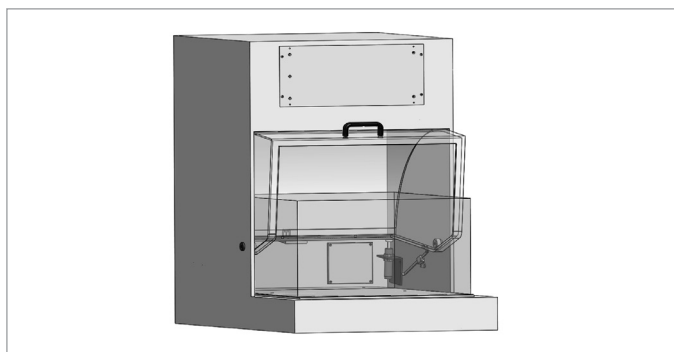
Description	For test station installations in which a necessary protection against contact is required, test hoods are especially well suited. Through the test hood the DUT cannot be touched during the generation of dangerous voltages. Once the test hood is opened there is a forced switch-off of the dangerous voltage.	
HB 7000A	<ul style="list-style-type: none"> Housing made of PVC (colour: RAL 7011) with device compartment 2 x 19" / 5 HU to house the test devices Swivelling acrylic glass hood with damper cylinder Safety switch with positive opening External dimensions (HxWxD): 900 x 1,500 x 880 mm (35.4 x 59.1 x 34.6 in.) Maximum DUT dimensions (HxWxD): 300 x 1,200 x 400 mm (11.8 x 47.2 x 15.7 in.) Setup CE-compliant (European regulation) 	
Variants	Test cage with light curtain	Instead of an acrylic glass hood also a safety light curtain can be used. This version meets the same requirements is, however, more convenient in handling because the test personnel does not need to operate the hood by hand. This is especially important with high quantities.
	Test cage with trapdoor	Test cages with trapdoor are mainly used when ergonomically a high number of DUT with a high weight is to be tested. The trapdoor is pneumatically moved, therefore the operator merely has to press a button, not move any mechanics.
	Tandem test hood	For large quantities so-called tandem test hoods are also a good solution. Here two equal test areas are available. While it is tested in one test area, the other one can be loaded or unloaded at the same time. In a similar test and handling time the result is an optimum utilization of human and machine. Tandem test hoods can be equipped with swivelling acrylic glass hoods, movable test hoods or also with safety light curtain.

Versions

Design types	Specialty	Max. dimensions of DUT (HxWxD) in mm (in.)	Type
Simple test hood	Device compartment 19" / 5 HU	180 x 410 x 350 (7.1 x 16.1 x 13.8)	HB 2100A
Simple test hood	Standard	200 x 500 x 350 (7.9 x 19.7 x 13.8)	HB 3400A
Extra wide test hood	Device compartment 19" / 5 HU	350 x 580 x 700 (13.8 x 22.8 x 27.6)	HB 5000A
Extra wide test hood	Double width, device compartment 2 x 19" / 4 HU	300 x 700 x 400 (11.8 x 27.6 x 15.7)	HB 6000A
Extra wide test hood	Double width, device compartment 2 x 19" / 5 HU	300 x 1,200 x 400 (11.8 x 47.2 x 15.7)	HB 7000A
Tandem test hood	Sliding hood, device compartment 2 x 19" / 3 HU	400 x 568 x 580 (15.7 x 22.4 x 22.8)	TK 6000A
Tandem test hood	Sliding hood	450 x 500 x 680 (17.7 x 19.7 x 26.8)	TK 7000A
Test cage with trapdoor	Trapdoor	755 x 800 x 640 (29.7 x 31.5 x 25.2)	FK 1000A
Test cage with light curtain	Light curtain on one side	790 x 640 x 660 (31.1 x 25.2 x 26.0)	PK 2000A
Test cage with light curtain	Double width, displaced foot space	940 x 1,890 x 975 (37.0 x 74.4 x 38.4)	PK 6000A
Test cage with light curtain	Device compartment 19" / 16 HU, displaced foot space	945 x 1,010 x 800 (37.2 x 39.8 x 31.5)	PK 7000A

DATA SHEET

Accessories: Test hood HB 5000A



Test hood HB 5000A with device compartment 19" / 5 HU

Description	For test station installations in which a necessary protection against contact is required, test hoods are especially well suited. Through the test hood the DUT cannot be touched during the generation of dangerous voltages. Once the test hood is opened there is a forced switch-off of the dangerous voltage.	
HB 5000A	<ul style="list-style-type: none"> Housing made of PVC (colour: RAL 7011) with device compartment 19" / 5 HU to house the test device Swivelling acrylic glass hood with damper cylinder Forcibly guided safety switch or optional positively driven safety interlock type AZM 161 (device compartment 4 HU) External dimensions (HxWxD): 1,050 x 680 x 1,100 mm (41.3 x 26.8 x 43.3 in.) Maximum DUT dimensions (HxWxD): 350 x 580 x 700 mm (13.8 x 22.8 x 27.6 in.) Setup CE-compliant (European regulation) 	
Variants	Test cage with light curtain	Instead of an acrylic glass hood also a safety light curtain can be used. This version meets the same requirements is, however, more convenient in handling because the test personnel does not need to operate the hood by hand. This is especially important with high quantities.
	Test cage with trapdoor	Test cages with trapdoor are mainly used when ergonomically a high number of DUT with a high weight is to be tested. The trapdoor is pneumatically moved, therefore the operator merely has to press a button, not move any mechanics.
	Tandem test hood	For large quantities so-called tandem test hoods are also a good solution. Here two equal test areas are available. While it is tested in one test area, the other one can be loaded or unloaded at the same time. In a similar test and handling time the result is an optimum utilization of human and machine. Tandem test hoods can be equipped with swivelling acrylic glass hoods, movable test hoods or also with safety light curtain.

Versions

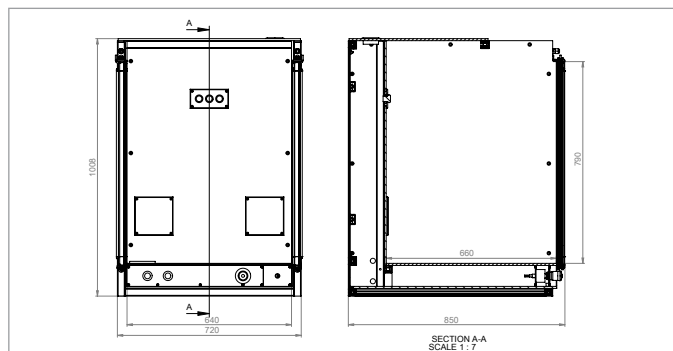
Design types	Specialty	Max. dimensions of DUT (HxWxD) in mm (in.)	Type
Simple test hood	Device compartment 19" / 5 HU	180 x 410 x 350 (7.1 x 16.1 x 13.8)	HB 2100A
Simple test hood	Standard	200 x 500 x 350 (7.9 x 19.7 x 13.8)	HB 3400A
Extra wide test hood	Device compartment 19" / 5 HU	350 x 580 x 700 (13.8 x 22.8 x 27.6)	HB 5000A
Extra wide test hood	Double width, device compartment 2 x 19" / 4 HU	300 x 700 x 400 (11.8 x 27.6 x 15.7)	HB 6000A
Extra wide test hood	Double width, device compartment 2 x 19" / 5 HU	300 x 1,200 x 400 (11.8 x 47.2 x 15.7)	HB 7000A
Tandem test hood	Sliding hood, device compartment 2 x 19" / 3 HU	400 x 568 x 580 (15.7 x 22.4 x 22.8)	TK 6000A
Tandem test hood	Sliding hood	450 x 500 x 680 (17.7 x 19.7 x 26.8)	TK 7000A
Test cage with trapdoor	Trapdoor	755 x 800 x 640 (29.7 x 31.5 x 25.2)	FK 1000A
Test cage with light curtain	Light curtain on one side	790 x 640 x 660 (31.1 x 25.2 x 26.0)	PK 2000A
Test cage with light curtain	Double width, displaced foot space	940 x 1,890 x 975 (37.0 x 74.4 x 38.4)	PK 6000A
Test cage with light curtain	Device compartment 19" / 16 HU, displaced foot space	945 x 1,010 x 800 (37.2 x 39.8 x 31.5)	PK 7000A

DATA SHEET

Accessories: Test cage PK 2000A



Test cage PK 2000A with light curtain



Description	For test station setups in which a necessary protection against contact is required, test cages are particularly well suited. Through the light curtain the DUT cannot be touched during the generation of dangerous voltages. Once the light curtain is interrupted there is a forced switch-off. Due to the simple and comfortable handling test cages with light curtain are particularly well suited for testing large quantities.	
PK 2000A	<ul style="list-style-type: none"> • Setup made of aluminium profile 30 x 30 mm (1.2 x 1.2 in.) • Fully insulated test room made of PVC (colour: RAL 7011), casing made of Pertinax (colour: RAL 7035) • Safety light curtain with finger protection, 14 mm (0.6 in.) (type 4, FIL3, PLe) • Optional: mobile base with device compartment 19" / 14 HU • External dimensions (HxWxD): 1,008 x 720 x 850 mm (39.7 x 28.3 x 33.5 in.) • Internal dimensions (HxWxD): 790 x 640 x 660 mm (31.1 x 25.2 x 26.0 in.) 	
Variants	Simple test hoods	For simple tests of small quantities test hoods with swivelling acrylic glass hoods are offered. These are available with or without device compartment to integrate a test device. In addition, depending on the application, different connection sets are available.
	Tandem test hood	For large quantities so-called tandem test hoods are also a good solution. Here two equal test areas are available. While it is tested in one test area, the other one can be loaded or unloaded at the same time. In a similar test and handling time the result is an optimum utilization of human and machine. Tandem test hoods can be equipped with swivelling acrylic glass hoods, movable test hoods or also with safety light curtain.
	Test cage with trapdoor	Test cages with trapdoor are mainly used when ergonomically a high number of DUT with a high weight is to be tested. The trapdoor is pneumatically moved, therefore the operator merely has to press a button, not move any mechanics.

Versions

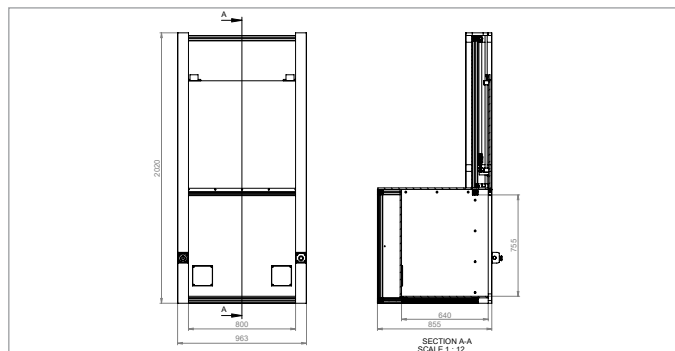
Design types	Specialty	Max. dimensions of DUT (HxWxD) in mm (in.)	Type
Simple test hood	Device compartment 19" / 5 HU	180 x 410 x 350 (7.1 x 16.1 x 13.8)	HB 2100A
Simple test hood	Standard	200 x 500 x 350 (7.9 x 19.7 x 13.8)	HB 3400A
Extra wide test hood	Device compartment 19" / 5 HU	350 x 580 x 700 (13.8 x 22.8 x 27.6)	HB 5000A
Extra wide test hood	Double width, device compartment 2 x 19" / 4 HU	300 x 700 x 400 (11.8 x 27.6 x 15.7)	HB 6000A
Extra wide test hood	Double width, device compartment 2 x 19" / 5 HU	300 x 1,200 x 400 (11.8 x 47.2 x 15.7)	HB 7000A
Tandem test hood	Sliding hood, device compartment 2 x 19" / 3 HU	400 x 568 x 580 (15.7 x 22.4 x 22.8)	TK 6000A
Tandem test hood	Sliding hood	450 x 500 x 680 (17.7 x 19.7 x 26.8)	TK 7000A
Test cage with trapdoor	Trapdoor	755 x 800 x 640 (29.7 x 31.5 x 25.2)	FK 1000A
Test cage with light curtain	Light curtain on one side	790 x 640 x 660 (31.1 x 25.2 x 26.0)	PK 2000A
Test cage with light curtain	Double width, displaced foot space	940 x 1,890 x 975 (37.0 x 74.4 x 38.4)	PK 6000A
Test cage with light curtain	Device compartment 19" / 16 HU, displaced foot space	945 x 1,010 x 800 (37.2 x 39.8 x 31.5)	PK 7000A

DATA SHEET

Accessories: Test cage FK 1000A



Test cage FK 1000A with trapdoor



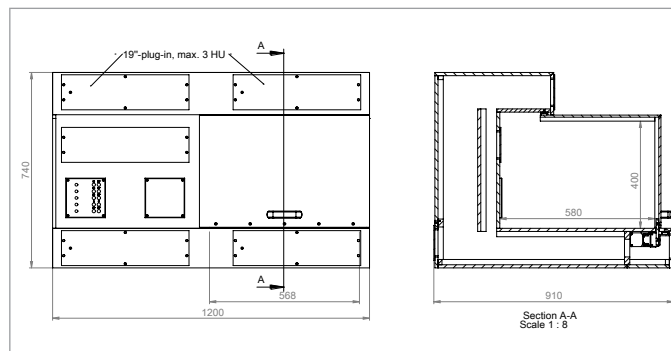
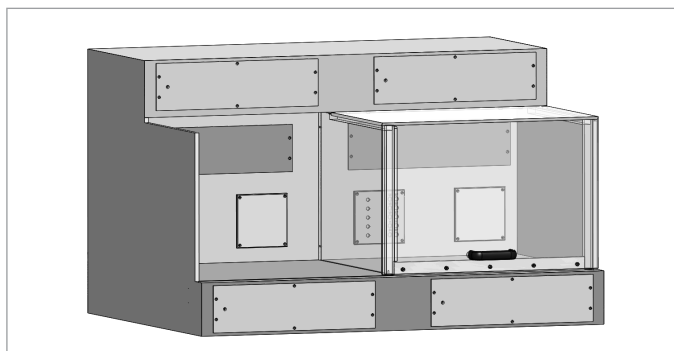
Description	<p>For test station installations in which a necessary protection against contact is required test cages are particularly well suited. Through to the trapdoor the DUT cannot be touched during the generation of dangerous voltages. Once the trapdoor is opened there is a forced switch-off of the dangerous voltage.</p> <p>Test cages with trapdoor are mainly used when high numbers of DUT with a high weight are to be tested ergonomically. The trapdoor is moved pneumatically, the operator merely has to press a button, not move any mechanics.</p>	
FK 1000A	<ul style="list-style-type: none"> • Setup made of aluminium profile 40 x 40 mm (1.6 x 1.6 in.) • Fully insulated test room made of PVC (colour: RAL 7011), casing made of Pertinax (colour: RAL 7035) • Pneumatically moving trap door made of polycarbonate (PC) with safety edge • Positively driven safety limit switch • External dimensions (HxWxD): 2,020 x 963 x 855 mm (79.5 x 37.9 x 33.7 in.) • Internal dimensions (HxWxD): 755 x 800 x 640 mm (29.7 x 31.5 x 25.2 in.) 	
Variants	Simple test hoods	For simple tests of small quantities test hoods with swivelling acrylic glass hoods are offered. These are available with or without device compartment to integrate a test device. In addition, depending on the application, different connection sets are available.
	Tandem test hood	For large quantities so-called tandem test hoods are also a good solution. Here two equal test areas are available. While it is tested in one test area, the other one can be loaded or unloaded at the same time. In a similar test and handling time the result is an optimum utilization of human and machine. Tandem test hoods can be equipped with swivelling acrylic glass hoods, movable test hoods or also with safety light curtain.
	Test cage with light curtain	Instead of an acrylic glass hood also a safety light curtain can be used. This version meets the same requirements is, however, more convenient in handling because the test personnel does not need to operate the hood by hand. This is especially important with high quantities.

Versions

Design types	Specialty	Max. dimensions of DUT (HxWxD) in mm (in.)	Type
Simple test hood	Device compartment 19" / 5 HU	180 x 410 x 350 (7.1 x 16.1 x 13.8)	HB 2100A
Simple test hood	Standard	200 x 500 x 350 (7.9 x 19.7 x 13.8)	HB 3400A
Extra wide test hood	Device compartment 19" / 5 HU	350 x 580 x 700 (13.8 x 22.8 x 27.6)	HB 5000A
Extra wide test hood	Double width, device compartment 2 x 19" / 4 HU	300 x 700 x 400 (11.8 x 27.6 x 15.7)	HB 6000A
Extra wide test hood	Double width, device compartment 2 x 19" / 5 HU	300 x 1,200 x 400 (11.8 x 47.2 x 15.7)	HB 7000A
Tandem test hood	Sliding hood, device compartment 2 x 19" / 3 HU	400 x 568 x 580 (15.7 x 22.4 x 22.8)	TK 6000A
Tandem test hood	Sliding hood	450 x 500 x 680 (17.7 x 19.7 x 26.8)	TK 7000A
Test cage with trapdoor	Trapdoor	755 x 800 x 640 (29.7 x 31.5 x 25.2)	FK 1000A
Test cage with light curtain	Light curtain on one side	790 x 640 x 660 (31.1 x 25.2 x 26.0)	PK 2000A
Test cage with light curtain	Double width, displaced foot space	940 x 1,890 x 975 (37.0 x 74.4 x 38.4)	PK 6000A
Test cage with light curtain	Device compartment 19" / 16 HU, displaced foot space	945 x 1,010 x 800 (37.2 x 39.8 x 31.5)	PK 7000A

DATA SHEET

Accessories: Tandem test hood TK 6000A



Tandem test hood TK 6000A with device compartment 2 x 19" / 3 HU

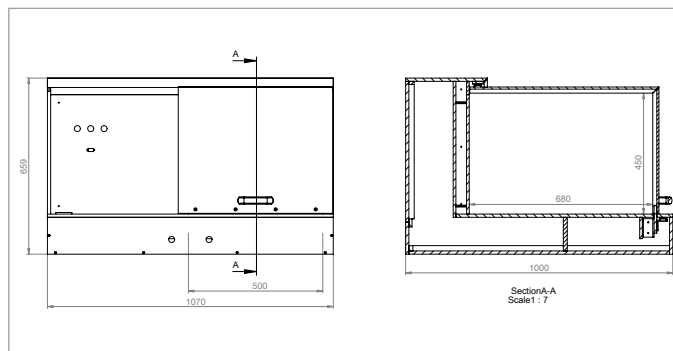
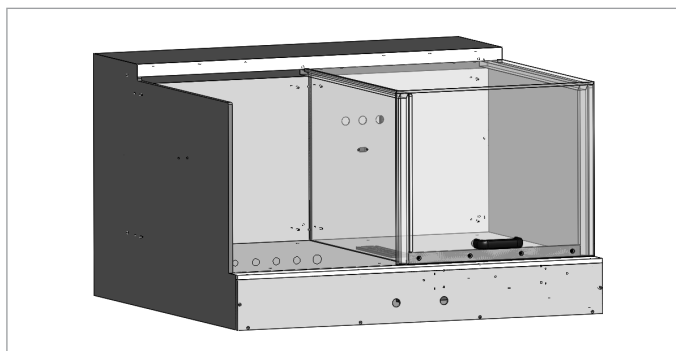
Description	For test station installations in which a necessary protection against contact is required, test hoods are especially well suited. Through the test hood the DUT cannot be touched during the generation of dangerous voltages. Tandem test hoods are particularly suitable for the testing of large numbers. There are two equal areas of testing available. While it is tested in on test area, the other one can be loaded or unloaded at the same time. In a similar test and handling time an optimum utilization of human and machine is the result.	
TK 6000A	<ul style="list-style-type: none"> Housing made of PVC (colour: RAL 7011) with device compartment 2 x 19" / 3 HU to house the test devices Movable acrylic glass hood Positively driven safety switch for each test station External dimensions (HxWxD): 740 x 1,200 x 910 mm (29.1 x 47.2 x 35.8 in.) Internal dimensions (HxWxD): 400 x 568 x 580 mm (15.7 x 22.4 x 22.8 in.) 	
Variants	Simple test hoods	For simple tests of small quantities test hoods with swivelling acrylic glass hoods are offered. These are available with or without device compartment to integrate a test device. In addition, depending on the application, different connection sets are available.
	Test cage with trapdoor	Test cages with trapdoor are mainly used when ergonomically a high number of DUT with a high weight is to be tested. The trapdoor is pneumatically moved, therefore the operator merely has to press a button, not move any mechanics.
	Test cage with light curtain	Instead of an acrylic glass hood also a safety light curtain can be used. This version meets the same requirements is, however, more convenient in handling because the test personnel does not need to operate the hood by hand. This is especially important with high quantities.

Versions

Design types	Specialty	Max. dimensions of DUT (HxWxD) in mm (in.)	Type
Simple test hood	Device compartment 19" / 5 HU	180 x 410 x 350 (7.1 x 16.1 x 13.8)	HB 2100A
Simple test hood	Standard	200 x 500 x 350 (7.9 x 19.7 x 13.8)	HB 3400A
Extra wide test hood	Device compartment 19" / 5 HU	350 x 580 x 700 (13.8 x 22.8 x 27.6)	HB 5000A
Extra wide test hood	Double width, device compartment 2 x 19" / 4 HU	300 x 700 x 400 (11.8 x 27.6 x 15.7)	HB 6000A
Extra wide test hood	Double width, device compartment 2 x 19" / 5 HU	300 x 1,200 x 400 (11.8 x 47.2 x 15.7)	HB 7000A
Tandem test hood	Sliding hood, device compartment 2 x 19" / 3 HU	400 x 568 x 580 (15.7 x 22.4 x 22.8)	TK 6000A
Tandem test hood	Sliding hood	450 x 500 x 680 (17.7 x 19.7 x 26.8)	TK 7000A
Test cage with trapdoor	Trapdoor	755 x 800 x 640 (29.7 x 31.5 x 25.2)	FK 1000A
Test cage with light curtain	Light curtain on one side	790 x 640 x 660 (31.1 x 25.2 x 26.0)	PK 2000A
Test cage with light curtain	Double width, displaced foot space	940 x 1,890 x 975 (37.0 x 74.4 x 38.4)	PK 6000A
Test cage with light curtain	Device compartment 19" / 16 HU, displaced foot space	945 x 1,010 x 800 (37.2 x 39.8 x 31.5)	PK 7000A

DATA SHEET

Accessories: Tandem test hood TK 7000A



Tandem test hood TK 7000A

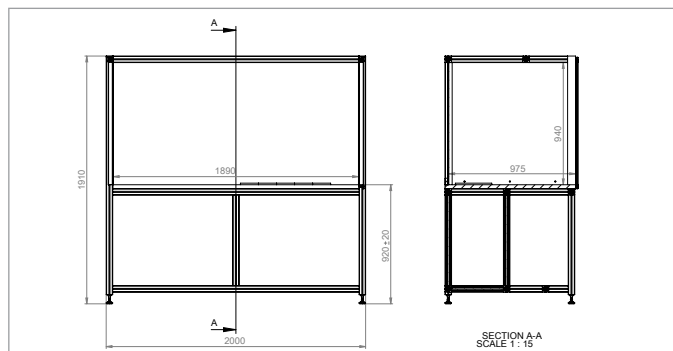
Description	<p>For test station installations in which a necessary protection against contact is required, test hoods are especially well suited. Through the test hood the DUT cannot be touched during the generation of dangerous voltages. Once the test hood is opened there is a forced switch-off of the dangerous voltage.</p> <p>Tandem test hoods are particularly suitable for the testing of large numbers. There are two equal areas of testing available. While it is tested in on test area, the other one can be loaded or unloaded at the same time. In a similar test and handling time an optimum utilization of human and machine is the result.</p>	
TK 7000A	<ul style="list-style-type: none"> • Housing made of PVC (colour: RAL 7011) • Movable acrylic glass hood • Positively driven safety switch for each test station • External dimensions (HxWxD): 659 x 1,070 x 1,000 mm (25.9 x 42.1 x 39.4 in.) • Internal dimensions (HxWxD): 450 x 500 x 680 mm (17.7 x 19.7 x 26.8 in.) 	
Variants	Simple test hoods	For simple tests of small quantities test hoods with swivelling acrylic glass hoods are offered. These are available with or without device compartment to integrate a test device. In addition, depending on the application, different connection sets are available.
	Test cage with trapdoor	Test cages with trapdoor are mainly used when ergonomically a high number of DUT with a high weight is to be tested. The trapdoor is pneumatically moved, therefore the operator merely has to press a button, not move any mechanics.
	Test cage with light curtain	Instead of an acrylic glass hood also a safety light curtain can be used. This version meets the same requirements is, however, more convenient in handling because the test personnel does not need to operate the hood by hand. This is especially important with high quantities.

Versions

Design types	Specialty	Max. dimensions of DUT (HxWxD) in mm (in.)	Type
Simple test hood	Device compartment 19" / 5 HU	180 x 410 x 350 (7.1 x 16.1 x 13.8)	HB 2100A
Simple test hood	Swivel hood	200 x 500 x 350 (7.9 x 19.7 x 13.8)	HB 3400A
Extra wide test hood	Device compartment 19" / 5 HU	350 x 580 x 700 (13.8 x 22.8 x 27.6)	HB 5000A
Extra wide test hood	Double width, device compartment 2 x 19" / 5 HU	300 x 700 x 400 (11.8 x 27.6 x 15.7)	HB 6000A
Extra wide test hood	Double width, device compartment 2 x 19" / 5 HU	300 x 1,200 x 400 (11.8 x 47.2 x 15.7)	HB 7000A
Tandem test hood	Sliding hood, device compartment 2 x 19" / 3 HU	400 x 568 x 580 (15.7 x 22.4 x 22.8)	TK 6000A
Tandem test hood	Sliding hood	450 x 500 x 680 (17.7 x 19.7 x 26.8)	TK 7000A
Test cage with trapdoor	Trapdoor	755 x 800 x 640 (29.7 x 31.5 x 25.2)	FK 1000A
Test cage with light curtain	Light curtain on one side	790 x 640 x 660 (31.1 x 25.2 x 26.0)	PK 2000A
Test cage with light curtain	Double width, displaced foot space	940 x 1,890 x 975 (37.0 x 74.4 x 38.4)	PK 6000A
Test cage with light curtain	Device compartment 19" / 16 HU, displaced foot space	945 x 1,010 x 800 (37.2 x 39.8 x 31.5)	PK 7000A

DATA SHEET

Accessories: Test cage PK 6000A



Test cage PK 6000A with light curtain and displaced foot space

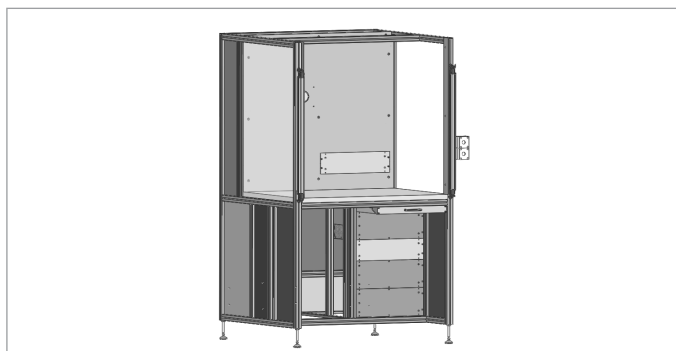
Description	<p>For test station setups in which a necessary protection against contact is required, test cages are particularly well suited. Through the light curtain the DUT cannot be touched during the generation of dangerous voltages. Once the light curtain is interrupted there is a forced switch-off.</p> <p>Due to the simple and comfortable handling test cages with light curtain are particularly well suited for testing large quantities.</p>	
PK 6000A	<ul style="list-style-type: none"> • Setup made of aluminium profile 50 x 50 mm (2.0 x 2.0 in.) • Fully insulated test room made of PVC (colour: RAL 7011), casing made of PVC (colour: RAL 7011) • Safety light curtain with finger protection, 14 mm (0.6 in.) (type 4, FIL3, PLe) • External dimensions (HxWxD): 1,910 x 2,000 x 1,030 mm (75.2 x 78.7 x 40.6 in.) • Internal dimensions (HxWxD): 940 x 1,890 x 975 mm (37.0 x 74.4 x 38.4 in.) 	
Variants	Simple test hoods	For simple tests of small quantities test hoods with swivelling acrylic glass hoods are offered. These are available with or without device compartment to integrate a test device. In addition, depending on the application, different connection sets are available.
	Tandem test hood	For large quantities so-called tandem test hoods are also a good solution. Here two equal test areas are available. While it is tested in one test area, the other one can be loaded or unloaded at the same time. In a similar test and handling time the result is an optimum utilization of human and machine. Tandem test hoods can be equipped with swivelling acrylic glass hoods, movable test hoods or also with safety light curtain.
	Test cage with trapdoor	Test cages with trapdoor are mainly used when ergonomically a high number of DUT with a high weight is to be tested. The trapdoor is pneumatically moved, therefore the operator merely has to press a button, not move any mechanics.

Versions

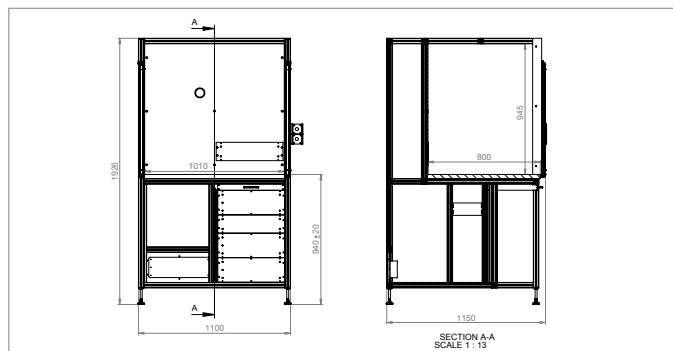
Design types	Specialty	Max. dimensions of DUT (HxWxD) in mm (in.)	Type
Simple test hood	Device compartment 19" / 5 HU	180 x 410 x 350 (7.1 x 16.1 x 13.8)	HB 2100A
Simple test hood	Standard	200 x 500 x 350 (7.9 x 19.7 x 13.8)	HB 3400A
Extra wide test hood	Device compartment 19" / 5 HU	350 x 580 x 700 (13.8 x 22.8 x 27.6)	HB 5000A
Extra wide test hood	Double width, device compartment 2 x 19" / 4 HU	300 x 700 x 400 (11.8 x 27.6 x 15.7)	HB 6000A
Extra wide test hood	Double width, device compartment 2 x 19" / 5 HU	300 x 1,200 x 400 (11.8 x 47.2 x 15.7)	HB 7000A
Tandem test hood	Sliding hood, device compartment 2 x 19" / 3 HU	400 x 568 x 580 (15.7 x 22.4 x 22.8)	TK 6000A
Tandem test hood	Sliding hood	450 x 500 x 680 (17.7 x 19.7 x 26.8)	TK 7000A
Test cage with trapdoor	Trapdoor	755 x 800 x 640 (29.7 x 31.5 x 25.2)	FK 1000A
Test cage with light curtain	Light curtain on one side	790 x 640 x 660 (31.1 x 25.2 x 26.0)	PK 2000A
Test cage with light curtain	Double width, displaced foot space	940 x 1,890 x 975 (37.0 x 74.4 x 38.4)	PK 6000A
Test cage with light curtain	Device compartment 19" / 16 HU, displaced foot space	945 x 1,010 x 800 (37.2 x 39.8 x 31.5)	PK 7000A

DATA SHEET

Accessories: Test cage PK 7000A



Test cage PK 7000A with light curtain and displaced foot space



Description	For test station setups in which a necessary protection against contact is required, test cages are particularly well suited. Through the light curtain the DUT cannot be touched during the generation of dangerous voltages. Once the light curtain is interrupted there is a forced switch-off. Due to the simple and comfortable handling test cages with light curtain are particularly well suited for testing large quantities.	
PK 7000A	<ul style="list-style-type: none"> • Setup made of aluminium profile 40 x 40 mm (1.6 x 1.6 in.) with device compartment 19" / 16 HU • Fully insulated test room made of PVC (colour: RAL 7011), casing made of PVC (colour: RAL 7011) and PC-polycarbonate (laterally) • Safety light curtain with finger protection, 14 mm (0.6 in.) (type 4, FIL3, PLc) • External dimensions (HxWxD): 1,926 x 1,100 x 1,150 mm (75.6 x 43.3 x 45.3 in.) • Internal dimensions (HxWxD): 945 x 1,010 x 800 mm (37.2 x 39.8 x 31.5 in.) 	
Variants	Simple test hoods	For simple tests of small quantities test hoods with swivelling acrylic glass hoods are offered. These are available with or without device compartment to integrate a test device. In addition, depending on the application, different connection sets are available.
	Tandem test hood	For large quantities so-called tandem test hoods are also a good solution. Here two equal test areas are available. While it is tested in one test area, the other one can be loaded or unloaded at the same time. In a similar test and handling time the result is an optimum utilization of human and machine. Tandem test hoods can be equipped with swivelling acrylic glass hoods, movable test hoods or also with safety light curtain.
	Test cage with trapdoor	Test cages with trapdoor are mainly used when ergonomically a high number of DUT with a high weight is to be tested. The trapdoor is pneumatically moved, therefore the operator merely has to press a button, not move any mechanics.

Versions

Design types	Specialty	Max. dimensions of DUT (HxWxD) in mm (in.)	Type
Simple test hood	Device compartment 19" / 5 HU	180 x 410 x 350 (7.1 x 16.1 x 13.8)	HB 2100A
Simple test hood	Standard	200 x 500 x 350 (7.9 x 19.7 x 13.8)	HB 3400A
Extra wide test hood	Device compartment 19" / 5 HU	350 x 580 x 700 (13.8 x 22.8 x 27.6)	HB 5000A
Extra wide test hood	Double width, device compartment 2 x 19" / 4 HU	300 x 700 x 400 (11.8 x 27.6 x 15.7)	HB 6000A
Extra wide test hood	Double width, device compartment 2 x 19" / 5 HU	300 x 1,200 x 400 (11.8 x 47.2 x 15.7)	HB 7000A
Tandem test hood	Sliding hood, device compartment 2 x 19" / 3 HU	400 x 568 x 580 (15.7 x 22.4 x 22.8)	TK 6000A
Tandem test hood	Sliding hood	450 x 500 x 680 (17.7 x 19.7 x 26.8)	TK 7000A
Test cage with trapdoor	Trapdoor	755 x 800 x 640 (29.7 x 31.5 x 25.2)	FK 1000A
Test cage with light curtain	Light curtain on one side	790 x 640 x 660 (31.1 x 25.2 x 26.0)	PK 2000A
Test cage with light curtain	Double width, displaced foot space	940 x 1,890 x 975 (37.0 x 74.4 x 38.4)	PK 6000A
Test cage with light curtain	Device compartment 19" / 16 HU, displaced foot space	945 x 1,010 x 800 (37.2 x 39.8 x 31.5)	PK 7000A